

State of Wyoming Corner Record

(In compliance with the CORNER PERPETUATION AND FILING ACT, Wyoming Statutes, 1997 Section 33-29-140 et. seq., and the Rules and Regulations of the Board of Professional Engineers and Professional Land Surveyors)

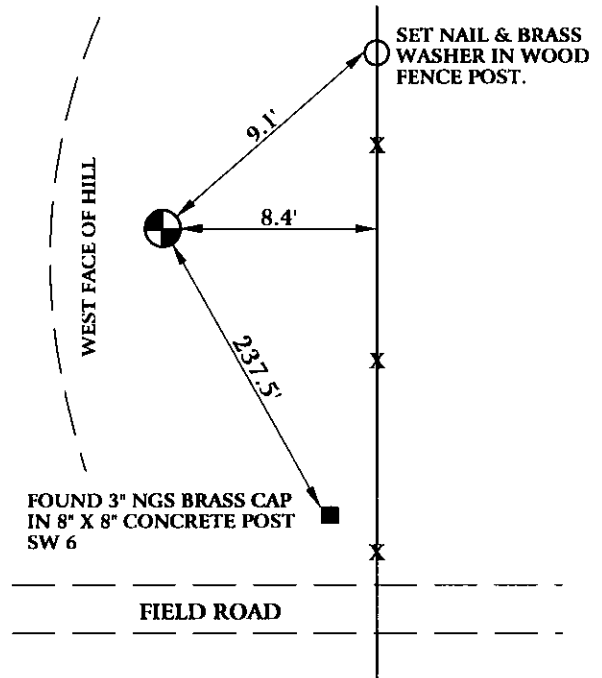
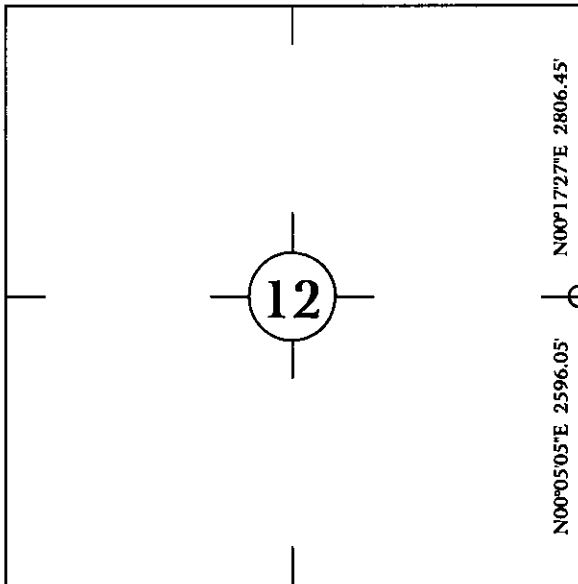
Reverse side of this form may be used if more space is needed.

Record of original survey and citation of source of historical information (if corner is lost or obliterated). Description of corner monumentation evidence found and/or monument and accessories established to perpetuate the location of this corner. Sketch of relative location of monument, accessories, and reference points with course and distance to adjacent corner(s) (if determined in this survey). Method and rationale for reestablishment of lost or obliterated corner.

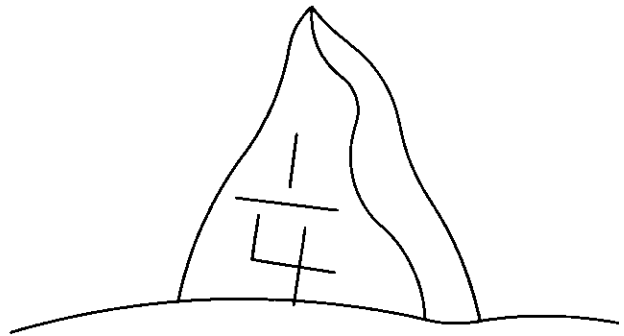
ORIGINAL CALL FOR 12" X 10" X 6" BOULDER STONE.

FOUND 5" X 7" PINK POINTED STONE 6" EXPOSED IN SMALL MOUND OF STONES WITH 1/4 MARKED ON WEST FACE.
SET NAIL AND BRASS WASHER IN FENCE POST FOR TIES AS SHOWN BELOW.

Monument location



Monument Inscription



WEST FACE OF 5" X 7" STONE

Date of Field Work: April 8, 2005

Office Reference: GALLEGOS05.pro

Cross Index Plat

1	2	3	4	5	6	7	8	9	10	11	12	13	14	15	16	17	18	19	20	21	22	23	24	25	
A																									A
B																									B
C		6				5					4					3						2			C
D																									D
E																									E
F																									F
G																									G
H																									H
I																									I
J																									J
K																									K
L																									L
M																									M
N																									N
O																									O
P																									P
Q																									Q
R																									R
S																									S
T																									T
U																									U
V																									V
W																									W
X																									X
Y																									Y
Z																									Z
1	2	3	4	5	6	7	8	9	10	11	12	13	14	15	16	17	18	19	20	21	22	23	24	25	

Firm/Agency, Address
CHARLES H. RUSSELL P.L.S. 6099
AMERICAN WEST LAND SURVEYING CO.
29 SOUTH 4TH AVENUE
BRIGHTON, CO 80601

Telephone Number:
303-659-1532

This corner record was prepared by me or under my direction and supervision.

SEAL & SIGNATURE



RECORDED 6/22/2005 AT 12:36 PM REC# 420219 BK# 1888 PG# 1089
DEBRA K. LATHROP, CLERK OF LARAMIE COUNTY, WY PAGE 1 OF 1

Corner Name: East 1/4 Corner, Section 12, T 12 N, R 69 W, 6th P.M.

Cross-Index No.: G-25

County: Laramie

SBRPEPLS/PLSW: March 1994; PLSW January 1998